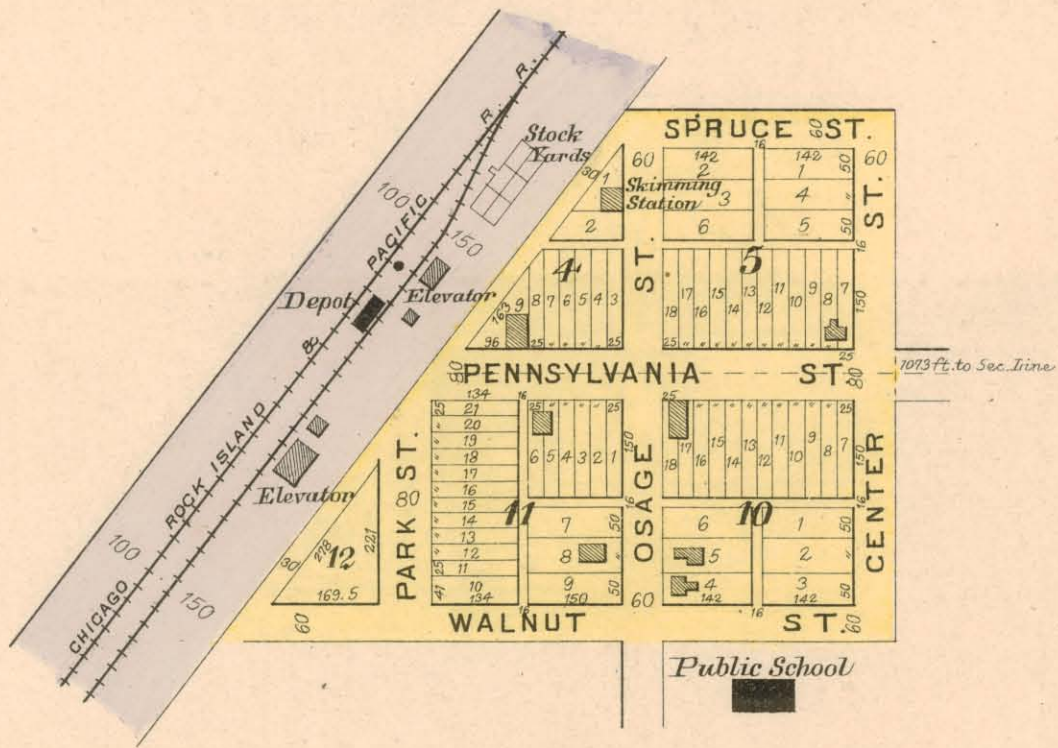


GROVELAND

LOCATED IN S.E. 1/4 OF SEC. 23, TWP. 20, R. 4 W.

Scale, 300 feet to 1 inch.



ELYRIA

KING CITY TWP.

Scale 200 feet to one inch.

Jno. Quinn

120 a.

L. F. Brannan

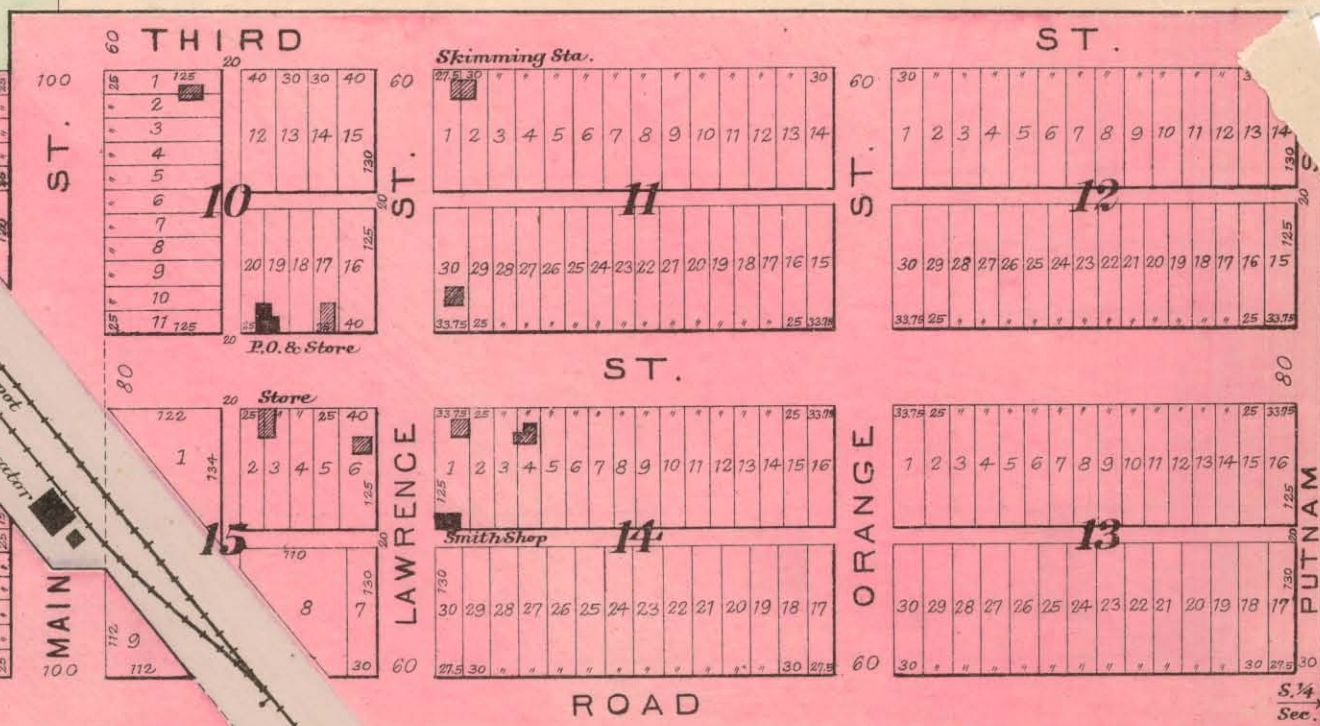
20 a.

J. S. Van Dusen

60 a.

160 a.

David Robertson



D. W. Day

160 a.

L. Robertson

40 a.

D. W. Day

27 26